





Portfolio

drafting &
design

index

Retail Store	3-8
Office Space.....	9-14
Construction Drawings	15-18

Biography

Originally from the Okanagan Valley in British Columbia, I am a Building Design graduate from the Centre for Arts and Technology in Kelowna, BC. After graduation and a bit of travelling, I got re-inspired to design buildings and spaces that are both innovative and captivating. Earlier this year, I moved here to Toronto Ontario in order to pursue bigger opportunities in Commercial Interior Design. I am fuelled by my passion for innovative and sustainable designs, leading towards the enhancement of not only the community but also user health, comfort and well being. I strive to work for a firm that designs and creates inspiring buildings with integrated sustainability and urban design capabilities; where client objectives are not only met but balanced with bold and cutting edge designs.



Retail Store

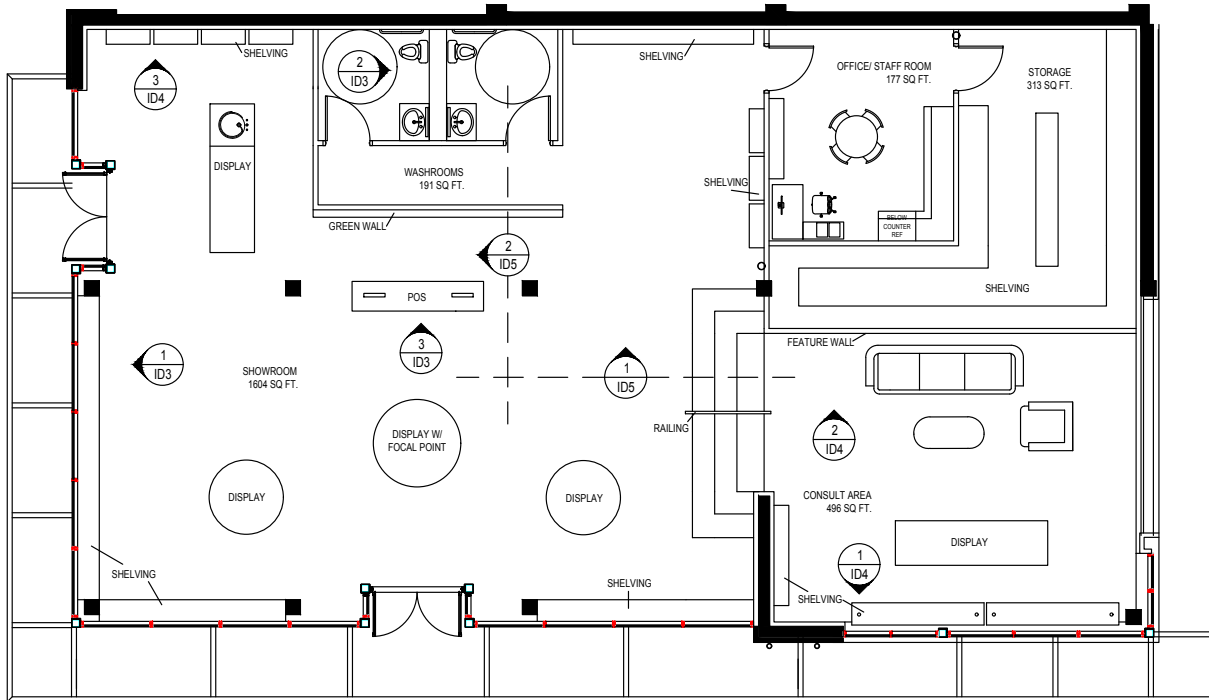
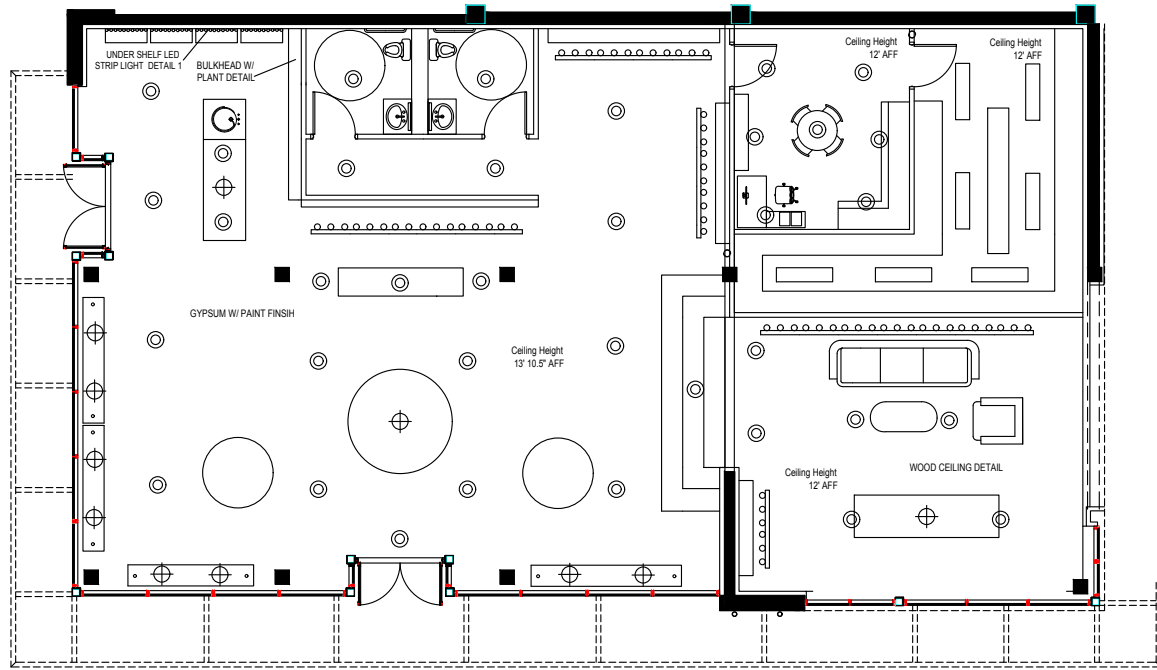
Scope

For the retail assignment we were given plans to a pre building and asked to reimagine it as retail space.

We were given unique product ranges to accommodate within the space. I was assigned to design a cosmetics store front.

honest

ycp



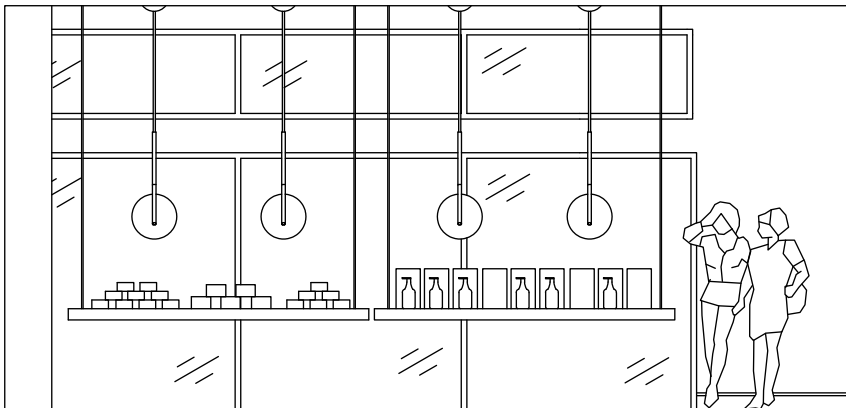
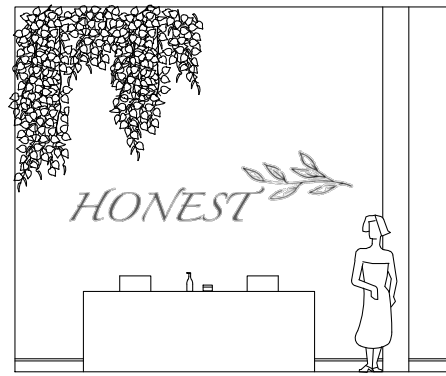
Plan



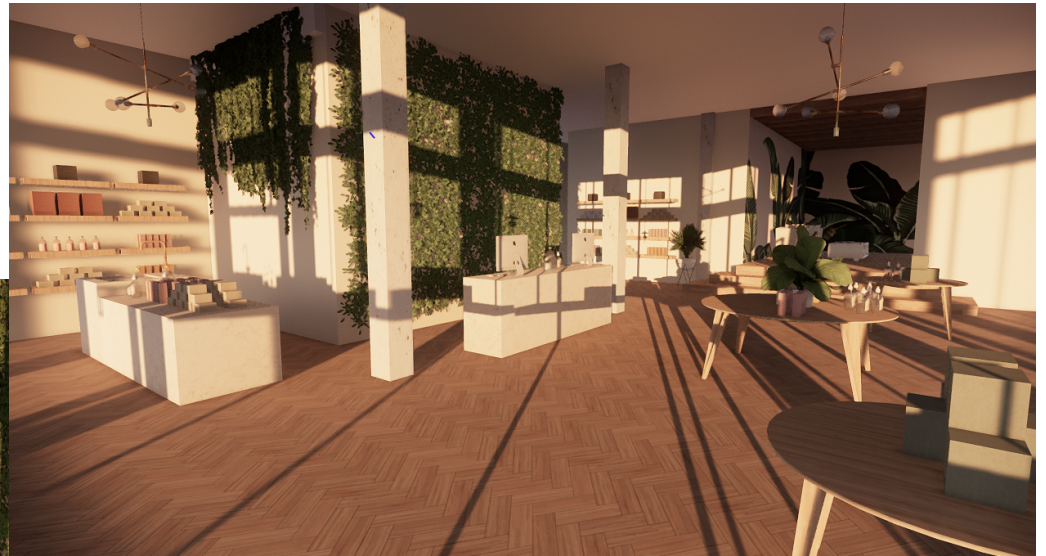
Concept

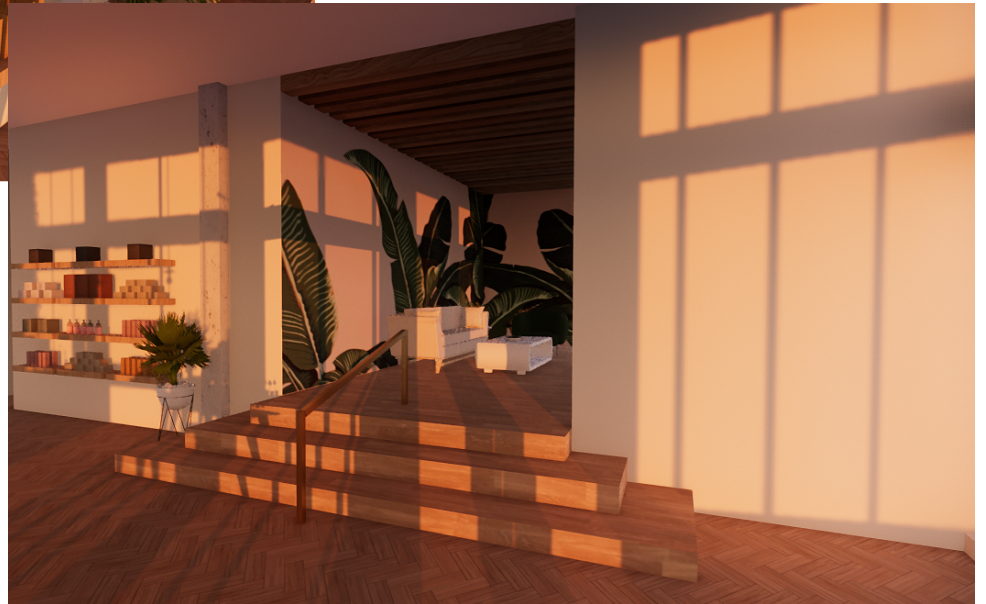
The design concept and primary inspiration is that of a fern. The idea is to create a space that mimics the freshness of nature. The lush greenery will serve as inspiration in creating this light, refreshing shopping experience. Organic colours and materials paired along with the abundance of natural lighting will bring an open and airy aesthetic to the space. The integration of plants as well as a green wall will further reiterate the concept of a space that feels closely linked to nature. The goal of this design is to create an organic design that mirrors the natural products that are going to be sold.

Elevations



Showroom Perspectives





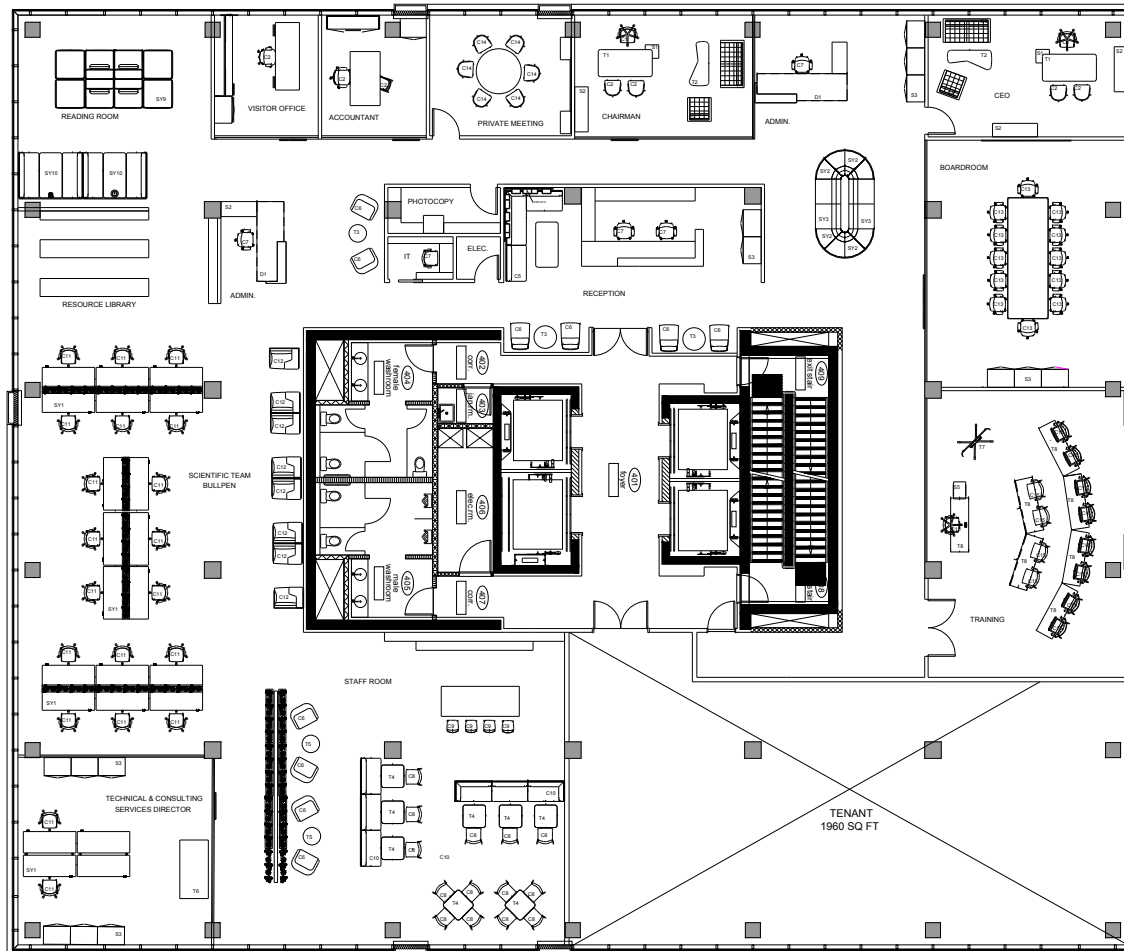


Office Space

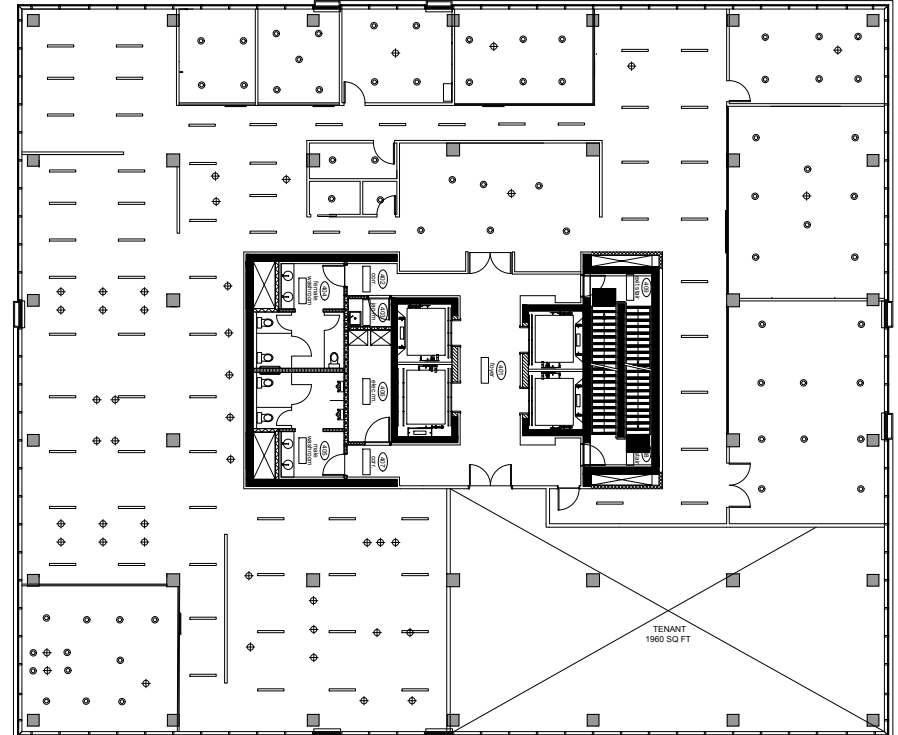
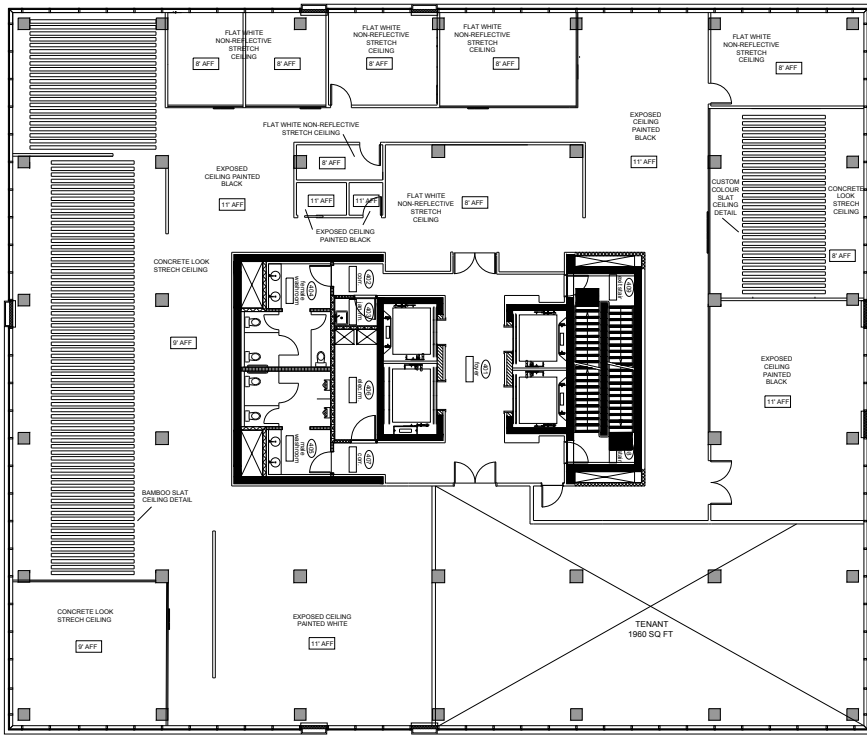
Scope

For the MSA Group office design we were given a pre existing space and asked so reimagine it into a functional office space that reflected the needs and values of the company.

Moa Group



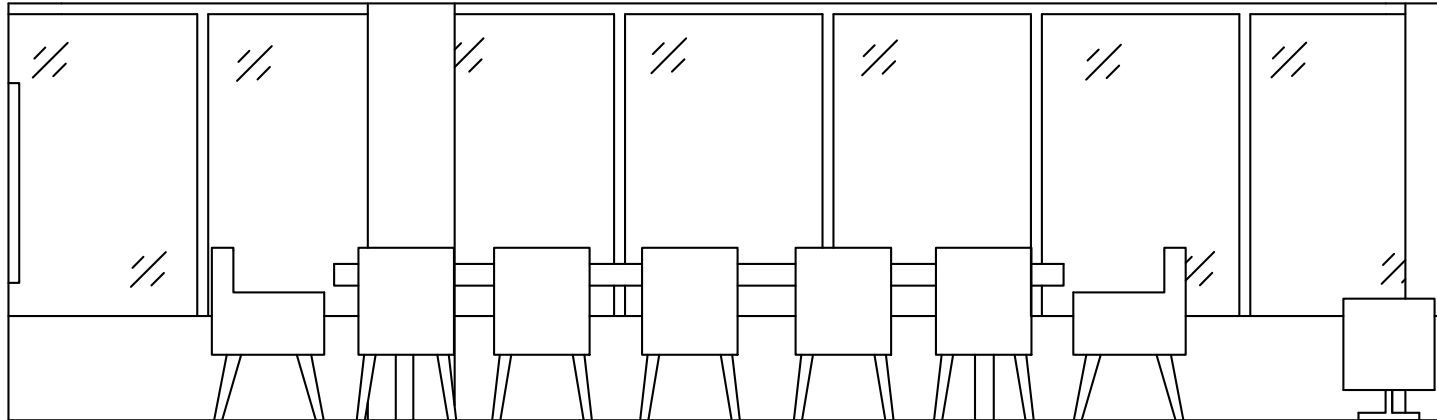
rep & lighting Plans



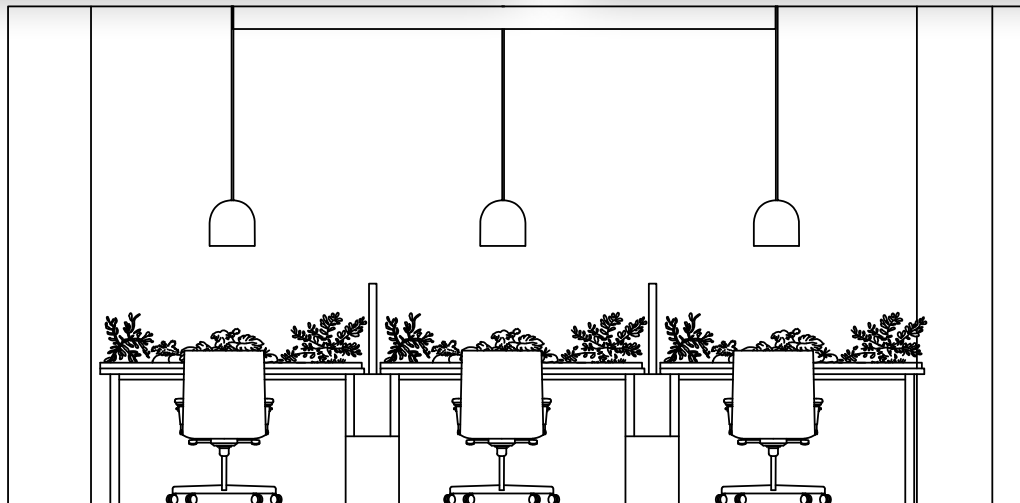
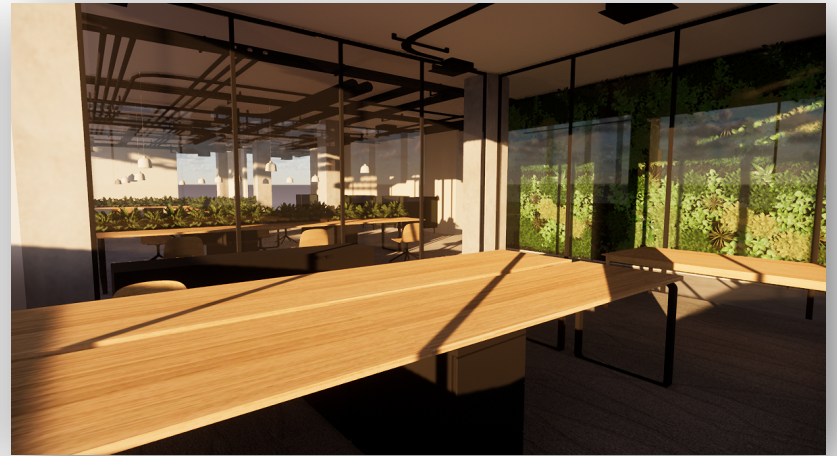
Concept

The design concept and primary inspiration for MSA Group's Vancouver office design is derived from nature. The idea is to create a space that mimics the environment and mirrors the company's core values. Sustainability, innovation, and responsibility are some of many values in which will be represented in the overall design. The integration of biophilia will attribute to the environmentally conscious goals of MSA Group as well as mirror the value of employee health and safety. The company's value of innovation will be represented through forward thinking design strategies and the incorporation of modern technology. Organic colours paired with natural stone and wood will be used to create a refreshing environment people are happy to walk into. The goal of this design is to not only create a functional office space for MSA Group, but to also encapsulate the image and values of the company and mirror what they stand for through design.

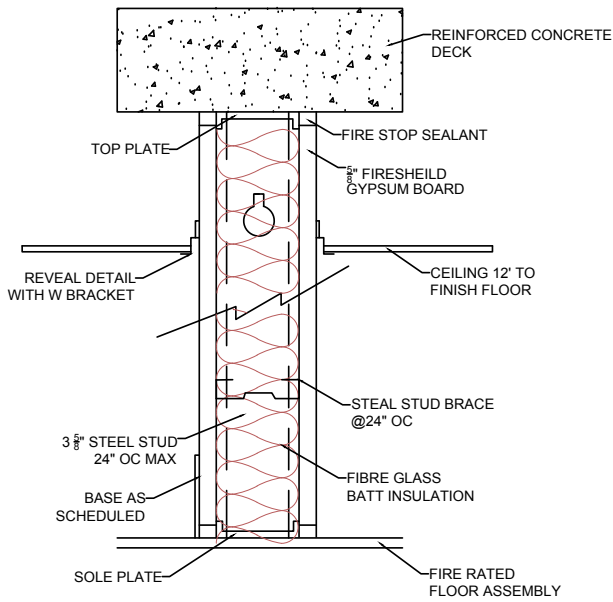
Boardroom



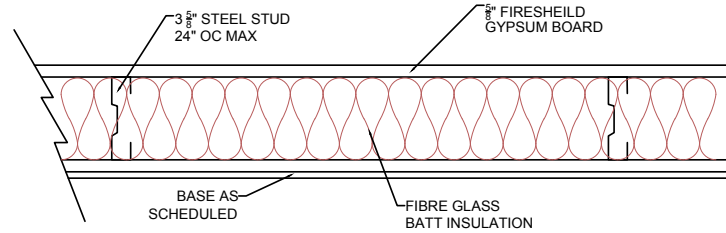
Bullpen



Technical Drawings

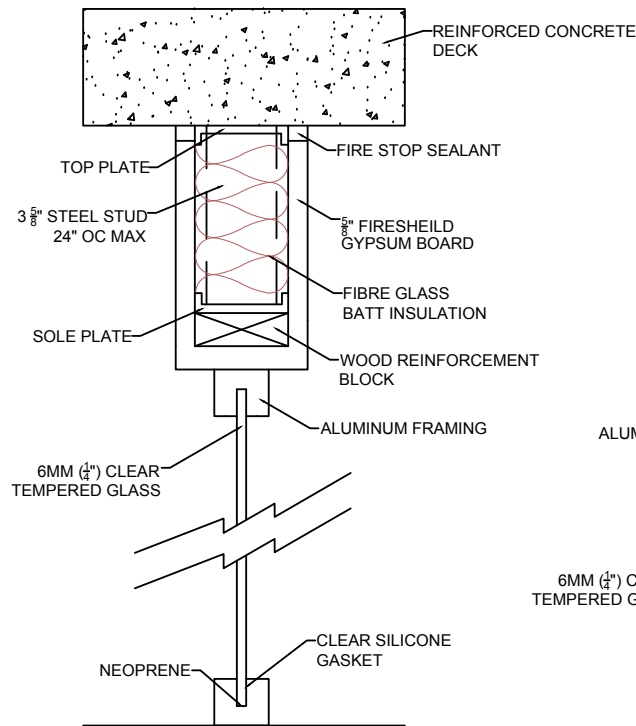


1 HOUR FIRE RATED WALL
1 SECTION- VERTICAL
 ID5 SCALE: 1 1/2" = 1'-0"



1 HOUR FIRE RATED WALL
2 SECTION- HORIZONTAL
 ID5 SCALE: 1 1/2" = 1'-0"

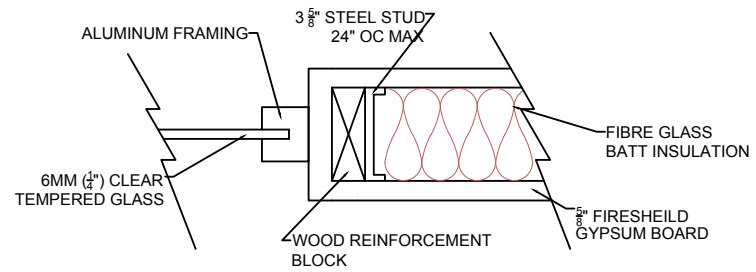
Partitions



1
ID6

FRAMED GLAZED PARTITION
SECTION- VERTICAL

SCALE: 1 1/2" = 1'-0"

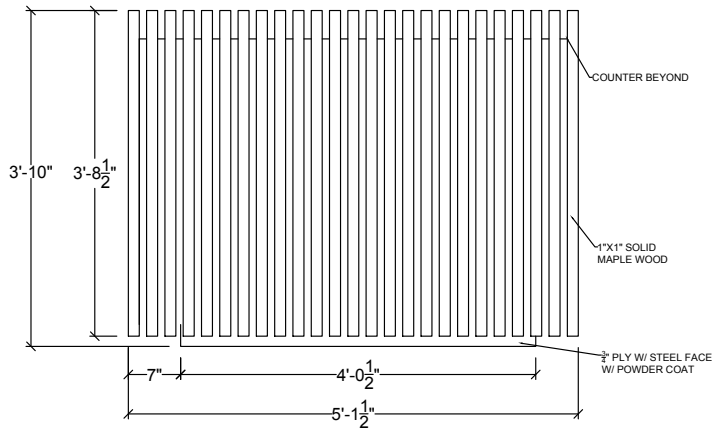


2
ID6

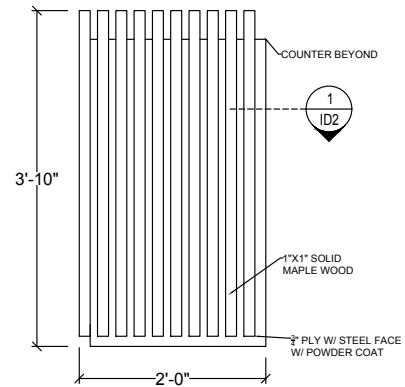
FRAMED GLAZED PARTITION
SECTION- HORIZONTAL

SCALE: 1 1/2" = 1'-0"

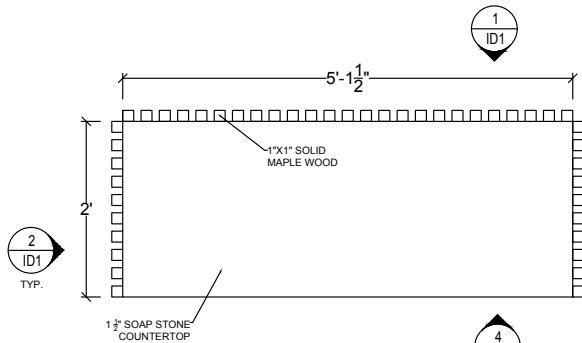
Custom furniture



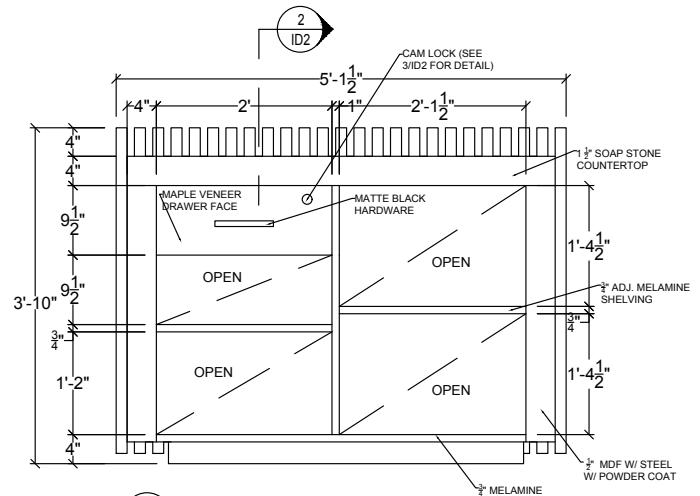
1 HOST STAND- FRONT ELEVATION
SCALE: 3/4" = 1'-0"



2 HOST STAND- SIDE ELEVATION
SCALE: 3/4" = 1'-0"



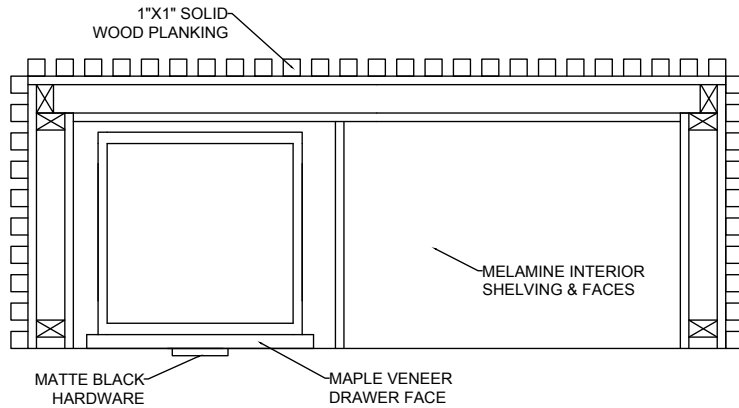
3 HOST STAND- PLAN VIEW
SCALE: 3/4" = 1'-0"



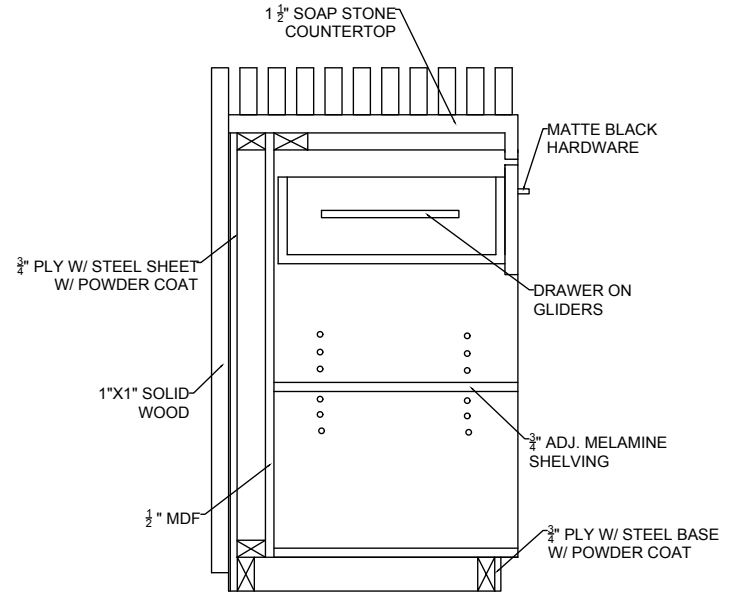
4 HOST STAND- BACK ELEVATION
SCALE: 3/4" = 1'-0"

ALL INTERIOR SURFACES TO BE MELAMINE

Host Stand



1 HOST STAND SECTION- HORIZONTAL
ID2 SCALE: 1" = 1'-0"



ALL INTERIOR SURFACES TO BE MELAMINE

2 HOST STAND SECTION- VERTICAL
ID2 SCALE: 1" = 1'-0"

CAM LOCK
DETAIL

3 HOST STAND DETAIL- CAM LOCK
ID2 SCALE: 1" = 1'-0"

